



# EXISTING CONDITIONS HIGHLIGHTS

## CITIES AND TOWNS

- Colorado Springs
- Monument
- Fountain
- Manitou Springs
- Green Mountain Falls
- Palmer Lake
- Calhan
- Ramah

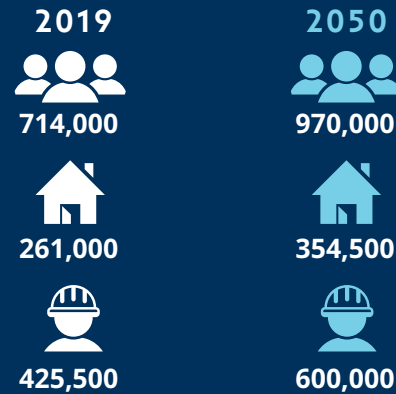
## UNINCORPORATED COMMUNITIES:

- Black Forest
- Cimarron Hills
- Ellicott
- Falcon
- Gleneagle
- Chipita Park
- Hanover
- Peyton
- Rush
- Security-Widefield
- Truckton and Yoder
- Cascade

## POPULATION, HOUSEHOLDS, AND EMPLOYMENT OVERVIEW

EL PASO COUNTY IS COLORADO'S MOST POPULOUS COUNTY

Growing rapidly: Adding **8,300** people and **5,600** jobs every year



Source: Your El Paso Master Plan (2021)



## MILITARY INSTALLATIONS:

**107,000** 57,000 military personnel and civilian contractors employed by the installations and other 50,000 indirect jobs.

- Fort Carson
- U.S. Air Force Academy
- Peterson Space Force Base
- Cheyenne Mountain Space Force Station
- Schriever Space Force Base

Source: Your El Paso Master Plan (2021)

## COMMUTER INFLOW - OUTFLOW

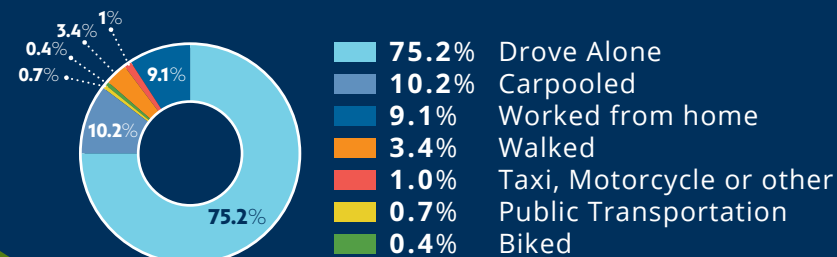
Each day, over 59,000 people commute from unincorporated areas of the County for work, including to cities and towns within El Paso County. Over 22,000 people commute into the unincorporated areas each day. And nearly 10,000 residents of the unincorporated county also work there.



Source: US Census Bureau, LEHD data 2019.

## COMMUTE:

**72%** of residents take **30 min** or less for commuting to work. Average commute is **24 min**



Source: US Census (ACS 5-yr estimates 2016-2020)

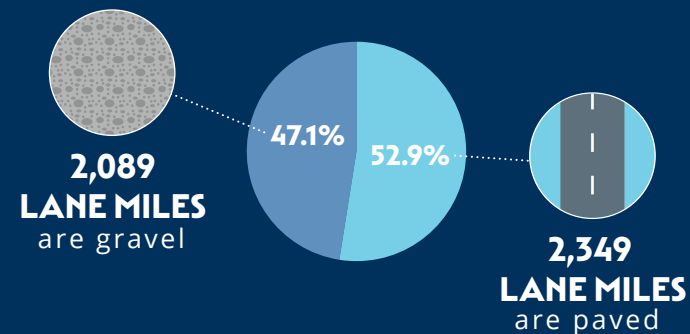
## HOUSING + TRANSPORTATION COSTS:

**28% HOUSING** **22% TRANSPORTATION**

Unincorporated El Paso County residents, on average, spend 28 percent of their household income on housing (H) and 22 percent on transportation (T). Combined, H+T index is 50 percent, more than the national benchmark of 45 percent.

Typically, a resident in the county spends approximately **\$12,786** on transportation related expenditures each year.

## 4,438 LANE MILES OF ROADS MAINTAINED BY EL PASO COUNTY



## UNINCORPORATED EL PASO COUNTY TRAILS

- Internal Park Trail: 43 miles
- Primary Regional Trail: 89 miles
- Secondary Regional Trail: 3 miles



## TRANSIT

- LOCAL:** Mountain Metropolitan Transit (MMT), Fountain Municipal Transit
- REGIONAL:** Ramblin Express, Bustang, Outrider
- RURAL:** Envida
- DEMAND RESPONSIVE:** Mountain Metro Mobility, Envida Moves, other human services
- P+R 6 PARK-N-RIDES:** Tejon, Woodmen, Monument, Fountain, Black Forest and Falcon

## SAFETY

**11,038**



**crashes**  
2015 to 2019 El Paso County crash data

**6,937**  
property damage only

**4,101**  
injury or fatalities

**VULNERABLE USER CRASHES**  
(bike or pedestrian)

**110**

**99** injuries  
5 fatalities

Bicyclist and pedestrian injury and fatal crashes represent a disproportionate share of the overall injuries and fatalities.

## CRASHES PER YEAR

